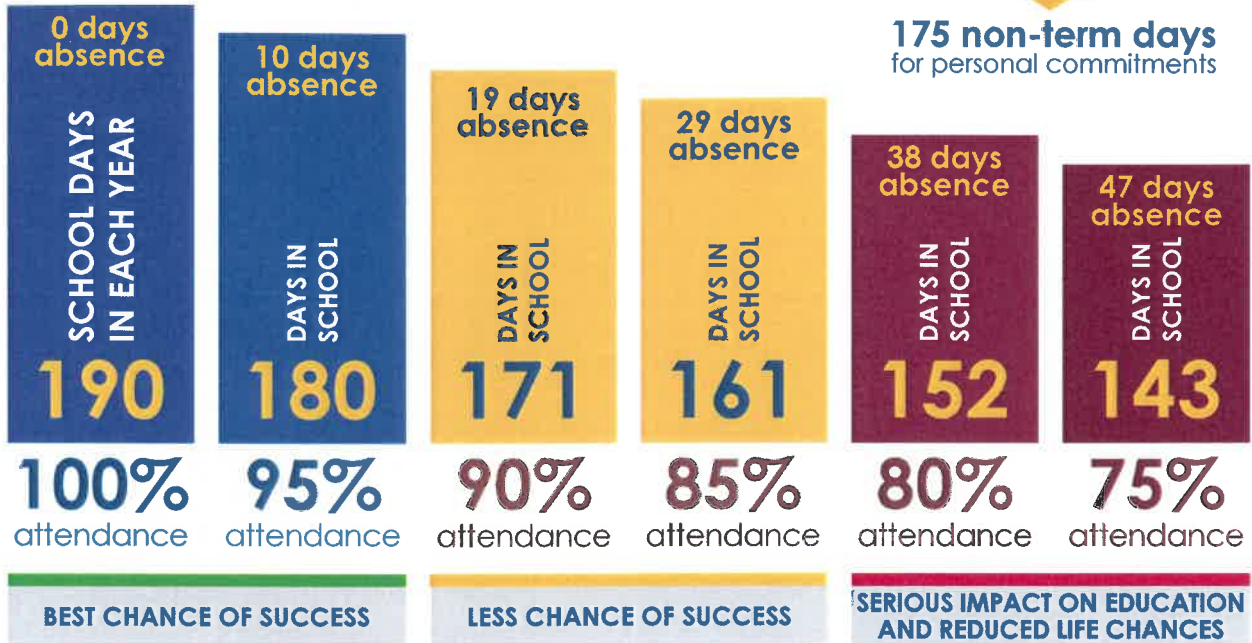



ATTENDANCE & PUNCTUALITY

95% attendance means 10 days absence and 50 lessons lost when there are 5 lessons a day.
90% attendance or less can reduce your chances of good outcomes by half.

MEDICAL APPOINTMENTS
 When possible, book them outside of school hours.

ILLNESS
 Unless it's serious, bring your child into school and we will keep an eye on them throughout the day.

FAMILY HOLIDAYS
 You have 175 days a year when you're not in school. A one-week holiday in term time means that the highest attendance you can achieve is 97%.




Average learning time per day: **5 HOURS**.
 If you are 15 minutes late each day, you will have missed **2 FULL WEEKS** of school in one year.